

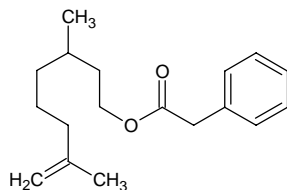
# rhodinyl phenylacetate

## ロジニル フェニルアセテート

Formula C<sub>18</sub>H<sub>26</sub>O<sub>2</sub>

Mol. Wt. 274.40

CAS No. 10486-14-3



SEQ No. 2276 エステル類

FEMA No. 2985

JECFA No. 1018

	JFFMA	JECFA	FCC
Chemical name	rhodinyl phenylacetate	Rhodinyl phenylacetate	
Content (NLT)	98.0 % (Chem)	95 %	
Refractive index	1.492-1.505 (n <sub>20D</sub> )	1.494-1.505 (n <sub>20D</sub> )	
Specific gravity	0.958-0.974 (d <sub>20/20</sub> )	0.965-0.972 (d <sub>25/25</sub> )	
Acid value (NMT)	1.0	1.0	
Melting/Congeealing point			
Angular/Specific rotation			
Heavy metals (NMT)			
Solubility in ethanol		Miscible at room temperature	
Other requirements			
Identification*	IR : MS :4 NMR :1	NMR	

### \*References

- 1: Joint FAO/WHO Expert Committee on Food Additive (JECFA)
- 2: Food Chemicals Codex (FCC)
- 3: 有機化合物のスペクトルデータベース SDBS(独立行政法人産業技術総合研究所)
- 4: Wiley's Registry of Mass spectral Database
- 5: NIST/EPA/NIH Mass Spectral Library
- 6: Sigma-Aldrich