

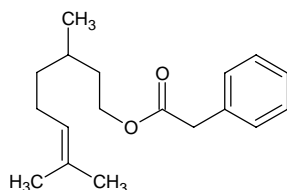
citronellyl phenylacetate

シトロネリル フェニルアセテート

Formula C₁₈H₂₆O₂

Mol. Wt. 274.40

CAS No. 139-70-8



SEQ No. 415 エステル類

FEMA No. 2315

JECFA No. 1021

	JFFMA	JECFA	FCC
Chemical name	citronellyl phenylacetate	Citronellyl phenylacetate	
Content (NLT)	98.0 % (Chem)	98 %	
Refractive index	1.492-1.499 (n _{20D})	1.492-1.510 (n _{20D})	
Specific gravity	0.958-0.965 (d _{20/20})	0.958-0.960 (d _{25/25})	
Acid value (NMT)	1.0	1.0	
Melting/Congeealing point			
Angular/Specific rotation			
Heavy metals (NMT)			
Solubility in ethanol		Miscible at room temperature	
Other requirements			
Identification*	IR : MS : 4,5 NMR : 1	NMR	

*References

- 1: Joint FAO/WHO Expert Committee on Food Additive (JECFA)
- 2: Food Chemicals Codex (FCC)
- 3: 有機化合物のスペクトルデータベース SDBS(独立行政法人産業技術総合研究所)
- 4: Wiley's Registry of Mass spectral Database
- 5: NIST/EPA/NIH Mass Spectral Library
- 6: Sigma-Aldrich