

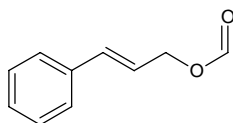
cinnamyl formate

シンナミル ホーメート

Formula C₁₀H₁₀O₂

Mol. Wt. 162.19

CAS No. 104-65-4



SEQ No. 384 エステル類

FEMA No. 2299

JECFA No. 649

	JFFMA	JECFA	FCC
Chemical name	cinnamyl formate	Cinnamyl formate	Cinnamyl Formate
Content (NLT)	92.0 % (GC)	95 %	92.0 % GC(M-1a)
Refractive index	1.548-1.558 (n _{20D})	1.550-1.556 (n _{20D})	1.550-1.556 (n _{20D})
Specific gravity	1.078-1.088 (d _{20/20})	1.075-1.082 (d _{25/25})	1.077-1.082 (d _{25/25})
Acid value (NMT)	3.0	3.0	3.0
Melting/Congeealing point			
Angular/Specific rotation			
Heavy metals (NMT)			
Solubility in ethanol		miscible	1 mL in 2 mL 80% alc gives clear soln
Other requirements			Cinnamyl Alcohol 8.0% /GC(M-1a)
Identification*	IR : 1,2,6 MS : 4,5 NMR :	IR	IR

*References

- 1: Joint FAO/WHO Expert Committee on Food Additive (JECFA)
- 2: Food Chemicals Codex (FCC)
- 3: 有機化合物のスペクトルデータベース SDBS(独立行政法人産業技術総合研究所)
- 4: Wiley's Registry of Mass spectral Database
- 5: NIST/EPA/NIH Mass Spectral Library
- 6: Sigma-Aldrich