

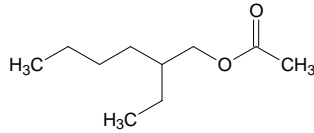
## 2-ethylhexyl acetate

### 2-エチルヘキシル アセテート

Formula C<sub>10</sub>H<sub>20</sub>O<sub>2</sub>

Mol. Wt. 172.26

CAS No. 103-09-3



SEQ No. 921 エステル類

FEMA No.

JECFA No.

	JFFMA	JECFA	FCC
Chemical name	2-ethylhexyl acetate		
Content (NLT)	98.0 % (GC)		
Refractive index	1.417-1.423 (n <sub>20D</sub> )		
Specific gravity	0.871-0.877 (d <sub>20/20</sub> )		
Acid value (NMT)	1.0		
Melting/Congeealing point			
Angular/Specific rotation			
Heavy metals (NMT)			
Solubility in ethanol			
Other requirements			
Identification*	IR :3		
	MS :3,4,5		
	NMR :3		

#### \*References

- 1: Joint FAO/WHO Expert Committee on Food Additive (JECFA)
- 2: Food Chemicals Codex (FCC)
- 3: 有機化合物のスペクトルデータベース SDDBS(独立行政法人産業技術総合研究所)
- 4: Wiley's Registry of Mass spectral Database
- 5: NIST/EPA/NIH Mass Spectral Library
- 6: Sigma-Aldrich