

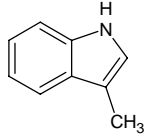
# skatole

## スカトール

Formula C<sub>9</sub>H<sub>9</sub>N

Mol. Wt. 131.17

CAS No. 83-34-1



SEQ No. 2292 インドール及びその誘導体

FEMA No. 3019

JECFA No. 1304

	JFFMA	JECFA	FCC
Chemical name	skatole	Skatole	
Content (NLT)	97.0 % (GC)	97 %	
Refractive index			
Specific gravity			
Acid value (NMT)			
Melting/Congeeing point	MP: 94 to 98°C	MP: 95 to 97°C	
Angular/Specific rotation			
Heavy metals (NMT)			
Solubility in ethanol		Soluble	
Other requirements			
Identification*	IR :3 MS :3,4,5 NMR :1,3	NMR	

### \*References

- 1: Joint FAO/WHO Expert Committee on Food Additive (JECFA)
- 2: Food Chemicals Codex (FCC)
- 3: 有機化合物のスペクトルデータベース SDBS(独立行政法人産業技術総合研究所)
- 4: Wiley's Registry of Mass spectral Database
- 5: NIST/EPA/NIH Mass Spectral Library
- 6: Sigma-Aldrich