

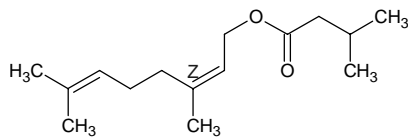
neryl isovalerate

ネリル イソバレレート

Formula C₁₅H₂₆O₂

Mol. Wt. 238.37

CAS No. 3915-83-1



SEQ No. 1935 エステル類

FEMA No. 2778

JECFA No. 76

	JFFMA	JECFA	FCC
Chemical name	neryl isovalerate	Neryl isovalerate	
Content (NLT)	92.0 % (GC) sum of isomers	99.0 %	
Refractive index	1.452-1.462 (n _{20D})	1.4531-1.460 (n _{20D})	
Specific gravity	0.892-0.902 (d _{20/20})	0.889-0.893 (d _{25/25})	
Acid value (NMT)	1.0		
Melting/Congeeing point			
Angular/Specific rotation			
Heavy metals (NMT)			
Solubility in ethanol		1 ml in 8 ml 80% alcohol	
Other requirements			
Identification*	IR : 1 MS : NMR :	IR	

*References

- 1: Joint FAO/WHO Expert Committee on Food Additive (JECFA)
- 2: Food Chemicals Codex (FCC)
- 3: 有機化合物のスペクトルデータベース SDBS(独立行政法人産業技術総合研究所)
- 4: Wiley's Registry of Mass spectral Database
- 5: NIST/EPA/NIH Mass Spectral Library
- 6: Sigma-Aldrich