

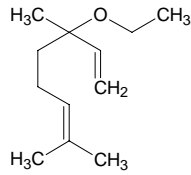
ethyl linalyl ether

エチル リナリル エーテル

Formula C₁₂H₂₂O

Mol. Wt. 182.30

CAS No. 72845-33-1



SEQ No. 1471 エーテル類

FEMA No. 4591

JECFA No.

	JFFMA	JECFA	FCC
Chemical name	ethyl linalyl ether		
Content (NLT)	96.0 % (GC)		
Refractive index	1.441-1.451 (n _{20D})		
Specific gravity	0.827-0.839 (d _{20/20})		
Acid value (NMT)			
Melting/Congeealing point			
Angular/Specific rotation			
Heavy metals (NMT)			
Solubility in ethanol			
Other requirements			
Identification*	IR :3		
	MS :3,4,5		
	NMR :3		

*References

- 1: Joint FAO/WHO Expert Committee on Food Additive (JECFA)
- 2: Food Chemicals Codex (FCC)
- 3: 有機化合物のスペクトルデータベース SDBS(独立行政法人産業技術総合研究所)
- 4: Wiley's Registry of Mass spectral Database
- 5: NIST/EPA/NIH Mass Spectral Library
- 6: Sigma-Aldrich