

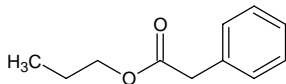
propyl phenylacetate

プロピル フェニルアセテート

Formula C₁₁H₁₄O₂

Mol. Wt. 178.23

CAS No. 4606-15-9



SEQ No. 2236 エステル類

FEMA No. 2955

JECFA No. 1010

	JFFMA	JECFA	FCC
Chemical name	propyl phenylacetate	Propyl phenylacetate	
Content (NLT)	97.0 % (GC)	97 %	
Refractive index	1.489-1.496 (n _{20D})	1.489-1.497 (n _{20D})	
Specific gravity	0.999-1.014 (d _{20/20})	0.985-0.995 (15.5°C)	
Acid value (NMT)	1.0	1.0	
Melting/Congeealing point			
Angular/Specific rotation			
Heavy metals (NMT)			
Solubility in ethanol		Miscible at room temperature	
Other requirements			
Identification*	IR : MS :4,5 NMR :1	NMR	

*References

- 1: Joint FAO/WHO Expert Committee on Food Additive (JECFA)
- 2: Food Chemicals Codex (FCC)
- 3: 有機化合物のスペクトルデータベース SDBS(独立行政法人産業技術総合研究所)
- 4: Wiley's Registry of Mass spectral Database
- 5: NIST/EPA/NIH Mass Spectral Library
- 6: Sigma-Aldrich