

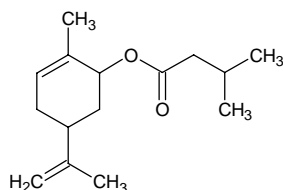
carvyl isovalerate

カルビル イソバレレート

Formula C₁₅H₂₄O₂

Mol. Wt. 236.35

CAS No. 94386-39-7



SEQ No. 355 エステル類

FEMA No.

JECFA No.

	JFFMA	JECFA	FCC
Chemical name	carvyl isovalerate		
Content (NLT)	97.0 % (GC) sum of isomers		
Refractive index	1.467-1.473 (n _{20D})		
Specific gravity	0.936-0.942 (d _{20/20})		
Acid value (NMT)	1.0		
Melting/Congeealing point			
Angular/Specific rotation			
Heavy metals (NMT)			
Solubility in ethanol			
Other requirements			
Identification*	IR :3		
	MS :3		
	NMR :		

*References

- 1: Joint FAO/WHO Expert Committee on Food Additive (JECFA)
- 2: Food Chemicals Codex (FCC)
- 3: 有機化合物のスペクトルデータベース SDBS(独立行政法人産業技術総合研究所)
- 4: Wiley's Registry of Mass spectral Database
- 5: NIST/EPA/NIH Mass Spectral Library
- 6: Sigma-Aldrich