

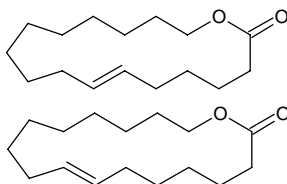
ambrettolide

アンブレットリド

Formula C₁₆H₂₈O₂

Mol. Wt. 252.39

CAS No. 123-69-3



SEQ No. 135 ラクトン類

FEMA No. 2555

JECFA No. 240

	JFFMA	JECFA	FCC
Chemical name	ambrettolide	omega-6-Hexadecenlactone	
Content (NLT)	97.0 % (GC)	98 %	
Refractive index	1.474-1.482 (n _{20D})	1.477-1.482 (n _{20D})	
Specific gravity	0.949-0.959 (d _{20/20})	0.949-0.957 (d _{25/25})	
Acid value (NMT)	5.0		
Melting/Congeealing point			
Angular/Specific rotation			
Heavy metals (NMT)			
Solubility in ethanol		1 ml in 9 ml 80% alcohol	
Other requirements			
Identification*	IR :1 MS :4,5 NMR :	IR	

*References

- 1: Joint FAO/WHO Expert Committee on Food Additive (JECFA)
- 2: Food Chemicals Codex (FCC)
- 3: 有機化合物のスペクトルデータベース SDBS(独立行政法人産業技術総合研究所)
- 4: Wiley's Registry of Mass spectral Database
- 5: NIST/EPA/NIH Mass Spectral Library
- 6: Sigma-Aldrich