

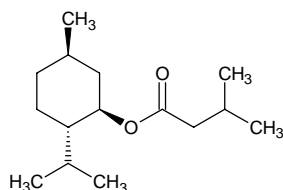
l-menthyl isovalerate

l-メントル イソバレレート

Formula C₁₅H₂₈O₂

Mol. Wt. 240.38

CAS No. 28221-20-7



SEQ No. 1527 エステル類

FEMA No. 2669

JECFA No. 432

| | JFFMA | JECFA | FCC |
|---------------------------|-------------------------------------|-----------------------------------|-----|
| Chemical name | l-menthyl isovalerate | Menthyl isovalerate | |
| Content (NLT) | 98.0 % (GC) | 96 % | |
| Refractive index | 1.444-1.450 (n _{20D}) | 1.445-1.450 (n _{20D}) | |
| Specific gravity | 0.900-0.906 (d _{20/20}) | 0.900-0.910 (d _{25/25}) | |
| Acid value (NMT) | 1.0 | 0.1 | |
| Melting/Congeealing point | | | |
| Angular/Specific rotation | AR: -60 to -56° (α _{20D}) | OR: -59 to -54° | |
| Heavy metals (NMT) | | | |
| Solubility in ethanol | | 1 ml in 10 ml 80% alcohol | |
| Other requirements | | | |
| Identification* | IR : 1,6 MS : 4,5 NMR : | IR | |

*References

- 1: Joint FAO/WHO Expert Committee on Food Additive (JECFA)
- 2: Food Chemicals Codex (FCC)
- 3: 有機化合物のスペクトルデータベース SDBS(独立行政法人産業技術総合研究所)
- 4: Wiley's Registry of Mass spectral Database
- 5: NIST/EPA/NIH Mass Spectral Library
- 6: Sigma-Aldrich