

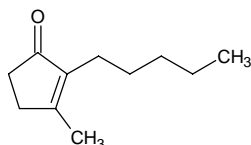
# 3-methyl-2-pentyl-2-cyclopentenone

## 3-メチル-2-ペンチル-2-シクロペンテノン

Formula C<sub>11</sub>H<sub>18</sub>O

Mol. Wt. 166.26

CAS No. 1128-08-1



SEQ No. 583 ケトン類

FEMA No. 3763

JECFA No. 1406

	JFFMA	JECFA	FCC
Chemical name	3-methyl-2-pentyl-2-cyclopentenone	3-Methyl-2-(n-pentanyl)-2-cyclopenten-1-one	
Content (NLT)	98.0 % (GC)	99 %	
Refractive index	1.476-1.482 (n <sub>20D</sub> )	1.676-1.682 (n <sub>20D</sub> )	
Specific gravity	0.913-0.919 (d <sub>20/20</sub> )	0.911-0.917 (d <sub>25/25</sub> )	
Acid value (NMT)		1.0	
Melting/Congeealing point			
Angular/Specific rotation			
Heavy metals (NMT)			
Solubility in ethanol		Soluble	
Other requirements			
Identification*	IR :3 MS :4,5 NMR :1,3,6	NMR	

### \*References

- 1: Joint FAO/WHO Expert Committee on Food Additive (JECFA)
- 2: Food Chemicals Codex (FCC)
- 3: 有機化合物のスペクトルデータベース SDBS(独立行政法人産業技術総合研究所)
- 4: Wiley's Registry of Mass spectral Database
- 5: NIST/EPA/NIH Mass Spectral Library
- 6: Sigma-Aldrich