

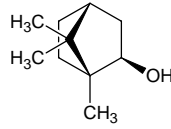
# isoborneol

## イソボルネオール

Formula C<sub>10</sub>H<sub>18</sub>O

Mol. Wt. 154.25

CAS No. 124-76-5



SEQ No. 1321 脂肪族高級アルコール類

FEMA No. 2158

JECFA No. 1386

	JFFMA	JECFA	FCC
Chemical name	isoborneol	Isoborneol	Isoborneol
Content (NLT)	90.0 % (GC)	92 %	
Refractive index			
Specific gravity			
Acid value (NMT)			
Melting/Congeealing point	MP: 208 to 214°C	MP: 212 to 214°C	mp: 212 to 214°C
Angular/Specific rotation			
Heavy metals (NMT)			
Solubility in ethanol		Soluble	1 g in 1 mL 95% alc
Other requirements		SC: Borneol	
Identification*	IR : 1,2,3,5,6 MS : 4,5 NMR : 3,6	IR	IR

### \*References

- 1: Joint FAO/WHO Expert Committee on Food Additive (JECFA)
- 2: Food Chemicals Codex (FCC)
- 3: 有機化合物のスペクトルデータベース SDBS(独立行政法人産業技術総合研究所)
- 4: Wiley's Registry of Mass spectral Database
- 5: NIST/EPA/NIH Mass Spectral Library
- 6: Sigma-Aldrich