

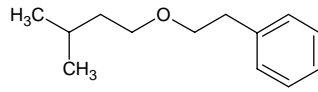
# isoamyl phenethyl ether

## イソアミル フェネチル エーテル

Formula C<sub>13</sub>H<sub>20</sub>O

Mol. Wt. 192.30

CAS No. 56011-02-0



SEQ No. 1311 エーテル類

FEMA No. 4635

JECFA No.

|                           | JFFMA                             | JECFA | FCC |
|---------------------------|-----------------------------------|-------|-----|
| Chemical name             | isoamyl phenethyl ether           |       |     |
| Content (NLT)             | 98.0 % (GC)                       |       |     |
| Refractive index          | 1.477-1.485 (n <sub>20D</sub> )   |       |     |
| Specific gravity          | 0.897-0.913 (d <sub>20/20</sub> ) |       |     |
| Acid value (NMT)          |                                   |       |     |
| Melting/Congeealing point |                                   |       |     |
| Angular/Specific rotation |                                   |       |     |
| Heavy metals (NMT)        |                                   |       |     |
| Solubility in ethanol     |                                   |       |     |
| Other requirements        |                                   |       |     |
| Identification*           | IR :3                             |       |     |
|                           | MS :3                             |       |     |
|                           | NMR :3                            |       |     |

### \*References

- 1: Joint FAO/WHO Expert Committee on Food Additive (JECFA)
- 2: Food Chemicals Codex (FCC)
- 3: 有機化合物のスペクトルデータベース SDBS(独立行政法人産業技術総合研究所)
- 4: Wiley's Registry of Mass spectral Database
- 5: NIST/EPA/NIH Mass Spectral Library
- 6: Sigma-Aldrich