

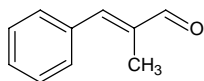
alpha-methylcinnamaldehyde

α-メチルシンナムアルデヒド

Formula C₁₀H₁₀O

Mol. Wt. 146.19

CAS No. 101-39-3



SEQ No. 1823 芳香族アルデヒド類

FEMA No. 2697

JECFA No. 683

	JFFMA	JECFA	FCC
Chemical name	alpha-methylcinnamaldehyde	alpha-Methylcinnamaldehyde	α-Methylcinnamaldehyde
Content (NLT)	95.0 % (GC)	95 %	97.0 % one major isomer /GC(M-1b)
Refractive index	1.597-1.607 (n _{20D})	1.598-1.607 (n _{20D})	1.602-1.607 (n _{20D})
Specific gravity	1.034-1.044 (d _{20/20})	1.034-1.040 (d _{25/25})	1.035-1.039 (d _{25/25})
Acid value (NMT)	5.0	5.0	5.0
Melting/Congeealing point			
Angular/Specific rotation			
Heavy metals (NMT)			
Solubility in ethanol		miscible	1 mL in 3 mL 70% alc remains clear on dilution
Other requirements			
Identification*	IR :1,2,3,6 MS :3,4,5 NMR :3,6	IR	IR

*References

- 1: Joint FAO/WHO Expert Committee on Food Additive (JECFA)
- 2: Food Chemicals Codex (FCC)
- 3: 有機化合物のスペクトルデータベース SDBS(独立行政法人産業技術総合研究所)
- 4: Wiley's Registry of Mass spectral Database
- 5: NIST/EPA/NIH Mass Spectral Library
- 6: Sigma-Aldrich