

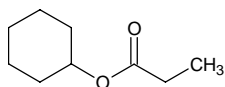
# cyclohexyl propionate

## シクロヘキシル プロピオネート

Formula C<sub>9</sub>H<sub>16</sub>O<sub>2</sub>

Mol. Wt. 156.22

CAS No. 6222-35-1



SEQ No. 457 エステル類

FEMA No. 2354

JECFA No. 1097

	JFFMA	JECFA	FCC
Chemical name	cyclohexyl propionate	Cyclohexyl propionate	
Content (NLT)	98.0 % (GC)	97 %	
Refractive index	1.439-1.445 (n <sub>20D</sub> )	1.439-1.446 (n <sub>20D</sub> )	
Specific gravity	0.953-0.962 (d <sub>20/20</sub> )	0.969-0.974 (d <sub>25/25</sub> )	
Acid value (NMT)	1.0	1.0	
Melting/Congeealing point			
Angular/Specific rotation			
Heavy metals (NMT)			
Solubility in ethanol		Miscible at room temperature	
Other requirements			
Identification*	IR :3,5 MS :3,4,5 NMR :1,3	NMR	

### \*References

- 1: Joint FAO/WHO Expert Committee on Food Additive (JECFA)
- 2: Food Chemicals Codex (FCC)
- 3: 有機化合物のスペクトルデータベース SDBS(独立行政法人産業技術総合研究所)
- 4: Wiley's Registry of Mass spectral Database
- 5: NIST/EPA/NIH Mass Spectral Library
- 6: Sigma-Aldrich