

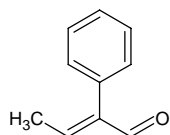
## 2-phenyl-2-butenal

### 2-フェニル-2-ブテナール

Formula C<sub>10</sub>H<sub>10</sub>O

Mol. Wt. 146.19

CAS No. 4411-89-6



SEQ No. 2142 芳香族アルデヒド類

FEMA No. 3224

JECFA No. 1474

	JFFMA	JECFA	FCC
Chemical name	2-phenyl-2-butenal	2-Phenyl-2-butenal	
Content (NLT)	95.0 % (GC)	97 %	
Refractive index	1.553-1.566 (n <sub>20D</sub> )	1.558-1.564 (n <sub>20D</sub> )	
Specific gravity	1.024-1.039 (d <sub>20/20</sub> )	1.031-1.037 (d <sub>25/25</sub> )	
Acid value (NMT)	10.0	5	
Melting/Congeealing point			
Angular/Specific rotation			
Heavy metals (NMT)			
Solubility in ethanol		Soluble	
Other requirements			
Identification*	IR : MS :4,5 NMR :1	NMR	

\*References

- 1: Joint FAO/WHO Expert Committee on Food Additive (JECFA)
- 2: Food Chemicals Codex (FCC)
- 3: 有機化合物のスペクトルデータベース SDBS(独立行政法人産業技術総合研究所)
- 4: Wiley's Registry of Mass spectral Database
- 5: NIST/EPA/NIH Mass Spectral Library
- 6: Sigma-Aldrich