

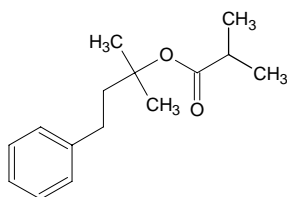
## 2-methyl-4-phenyl-2-butyl isobutyrate

### 2-メチル-4-フェニル-2-ブチル イソブチレート

Formula C<sub>15</sub>H<sub>22</sub>O<sub>2</sub>

Mol. Wt. 234.33

CAS No. 10031-71-7



SEQ No. 621 エステル類

FEMA No. 2736

JECFA No. 1461

	JFFMA	JECFA	FCC
Chemical name	2-methyl-4-phenyl-2-butyl isobutyrate	2-Methyl-4-phenyl-2-butyl isobutyrate	
Content (NLT)	97.0 % (GC)	96 %	
Refractive index	1.475-1.485 (n <sub>20D</sub> )	1.475-1.485 (n <sub>20D</sub> )	
Specific gravity	0.950-0.959 (d <sub>20/20</sub> )	0.949-0.959 (d <sub>25/25</sub> )	
Acid value (NMT)	1.0	1	
Melting/Congeeing point			
Angular/Specific rotation			
Heavy metals (NMT)			
Solubility in ethanol		Soluble	
Other requirements			
Identification*	IR : MS : NMR :1	NMR	

#### \*References

- 1: Joint FAO/WHO Expert Committee on Food Additive (JECFA)
- 2: Food Chemicals Codex (FCC)
- 3: 有機化合物のスペクトルデータベース SDBS(独立行政法人産業技術総合研究所)
- 4: Wiley's Registry of Mass spectral Database
- 5: NIST/EPA/NIH Mass Spectral Library
- 6: Sigma-Aldrich