

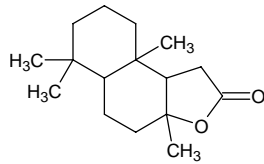
sclareolide

スクラレオリド

Formula C₁₆H₂₆O₂

Mol. Wt. 250.38

CAS No. 564-20-5



SEQ No. 2289 ラクトン類

FEMA No. 3794

JECFA No. 1165

	JFFMA	JECFA	FCC
Chemical name	sclareolide	Sclareolide	
Content (NLT)	98.0 % (GC)	98 %	
Refractive index			
Specific gravity			
Acid value (NMT)	1.0	1	
Melting/Congeeing point	MP: 121 to 125°C	MP: 124.4°C	
Angular/Specific rotation			
Heavy metals (NMT)			
Solubility in ethanol		slightly soluble	
Other requirements			
Identification*	IR :1,6 MS :4,5 NMR :1,6	IR HNMR	

*References

- 1: Joint FAO/WHO Expert Committee on Food Additive (JECFA)
- 2: Food Chemicals Codex (FCC)
- 3: 有機化合物のスペクトルデータベース SDBS(独立行政法人産業技術総合研究所)
- 4: Wiley's Registry of Mass spectral Database
- 5: NIST/EPA/NIH Mass Spectral Library
- 6: Sigma-Aldrich