

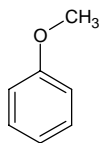
# anisole

## アニソール

Formula C<sub>7</sub>H<sub>8</sub>O

Mol. Wt. 108.14

CAS No. 100-66-3



SEQ No. 186 フェノールエーテル類

FEMA No. 2097

JECFA No. 1241

	JFFMA	JECFA	FCC
Chemical name	anisole	Anisole	Anisol
Content (NLT)	98.0 % (GC)	99 %	97.0 % GC(M-1b)
Refractive index	1.514-1.520 (n <sub>20D</sub> )	1.515-1.518 (n <sub>20D</sub> )	1.515-1.518 (n <sub>20D</sub> )
Specific gravity	0.993-0.999 (d <sub>20/20</sub> )	0.990-0.993 (d <sub>25/25</sub> )	0.990-0.993 (d <sub>25/25</sub> )
Acid value (NMT)		1	
Melting/Congeealing point			
Angular/Specific rotation			
Heavy metals (NMT)			
Solubility in ethanol		soluble	
Other requirements			Phenols-passes test.
Identification*	IR : 1,2,3,5,6 MS : 3,4,5 NMR : 3,6	IR	IR

### \*References

- 1: Joint FAO/WHO Expert Committee on Food Additive (JECFA)
- 2: Food Chemicals Codex (FCC)
- 3: 有機化合物のスペクトルデータベース SDBS(独立行政法人産業技術総合研究所)
- 4: Wiley's Registry of Mass spectral Database
- 5: NIST/EPA/NIH Mass Spectral Library
- 6: Sigma-Aldrich