

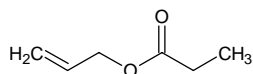
allyl propionate

アリル プロピオネート

Formula C₆H₁₀O₂

Mol. Wt. 114.14

CAS No. 2408-20-0



SEQ No. 123 エステル類

FEMA No. 2040

JECFA No. 1

| | JFFMA | JECFA | FCC |
|---------------------------|-----------------------------------|----------------------------|-----------------------------------|
| Chemical name | allyl propionate | Allyl propionate | Allyl Propionate |
| Content (NLT) | 98.0 % (GC) | 99 % | 97.0 % GC(M-1b) |
| Refractive index | 1.407-1.413 (n _{20D}) | 1.4105 (n _{20D}) | 1.408-1.413 (n _{20D}) |
| Specific gravity | 0.913-0.921 (d _{20/20}) | 0.914 (20°C) | 0.912-0.917 (d _{25/25}) |
| Acid value (NMT) | 1.0 | | 2.0 |
| Melting/Congeealing point | | | |
| Angular/Specific rotation | | | |
| Heavy metals (NMT) | | | |
| Solubility in ethanol | | | 1 mL in 1 mL 95% ethanol |
| Other requirements | | | |
| Identification* | IR : 1,2,5 MS : 4,5 NMR : | IR | IR |

*References

- 1: Joint FAO/WHO Expert Committee on Food Additive (JECFA)
- 2: Food Chemicals Codex (FCC)
- 3: 有機化合物のスペクトルデータベース SDBS(独立行政法人産業技術総合研究所)
- 4: Wiley's Registry of Mass spectral Database
- 5: NIST/EPA/NIH Mass Spectral Library
- 6: Sigma-Aldrich