

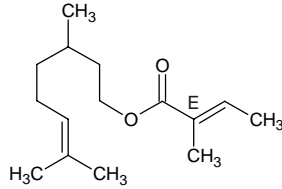
citronellyl tiglate

シトロネリル チグレート

Formula C₁₅H₂₆O₂

Mol. Wt. 238.37

CAS No. 24717-85-9



SEQ No. 416 エステル類

FEMA No. 4295

JECFA No. 1823

	JFFMA	JECFA	FCC
Chemical name	citronellyl tiglate	(E)-Citronellyl 2-methylbut-2-enoate	
Content (NLT)	98.0 % (Chem)	95 %	
Refractive index	1.460-1.468 (n _{20D})	1.460-1.470 (n _{20D})	
Specific gravity	0.901-0.909 (d _{20/20})	0.901-0.911 (d _{25/25})	
Acid value (NMT)	1.0		
Melting/Congeealing point			
Angular/Specific rotation			
Heavy metals (NMT)			
Solubility in ethanol		Soluble	
Other requirements			
Identification*	IR :6 MS :1,4 NMR :6	MS	

*References

- 1: Joint FAO/WHO Expert Committee on Food Additive (JECFA)
- 2: Food Chemicals Codex (FCC)
- 3: 有機化合物のスペクトルデータベース SDBS(独立行政法人産業技術総合研究所)
- 4: Wiley's Registry of Mass spectral Database
- 5: NIST/EPA/NIH Mass Spectral Library
- 6: Sigma-Aldrich