

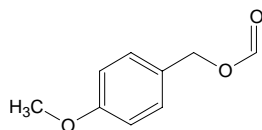
anisyl formate

アニシル ホーメート

Formula C₉H₁₀O₃

Mol. Wt. 166.17

CAS No. 122-91-8



SEQ No. 192 エステル類

FEMA No. 2101

JECFA No. 872

	JFFMA	JECFA	FCC
Chemical name	anisyl formate	Anisyl formate	Anisyl Formate
Content (NLT)	95.0 % (GC)	90 % GC, non-polar column	90.0 % GC(M-1b)
Refractive index	1.517-1.527 (n _{20D})	1.519-1.525 (n _{20D})	1.521-1.525 (n _{20D})
Specific gravity	1.139-1.149 (d _{20/20})	1.136-1.145 (d _{25/25})	1.138-1.142 (d _{25/25})
Acid value (NMT)	1.0	3.0	3.0
Melting/Congeeing point			
Angular/Specific rotation			
Heavy metals (NMT)			
Solubility in ethanol		miscible at room temperature	1 mL in 1 mL 95% alc
Other requirements		SC: Anisyl alcohol	
Identification*	IR :1,2,6 MS :4,5 NMR :6	IR	IR

*References

- 1: Joint FAO/WHO Expert Committee on Food Additive (JECFA)
- 2: Food Chemicals Codex (FCC)
- 3: 有機化合物のスペクトルデータベース SDBS(独立行政法人産業技術総合研究所)
- 4: Wiley's Registry of Mass spectral Database
- 5: NIST/EPA/NIH Mass Spectral Library
- 6: Sigma-Aldrich