

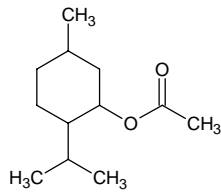
# menthyl acetate

## メントール アセテート

Formula C<sub>12</sub>H<sub>22</sub>O<sub>2</sub>

Mol. Wt. 198.30

CAS No. 16409-45-3  
89-48-5



SEQ No. 1520 エステル類

FEMA No. 2668

JECFA No. 431

	JFFMA	JECFA	FCC
Chemical name	menthyl acetate	Menthyl acetate	DL-Menthyl Acetate
Content (NLT)	98.0 % (GC)	97 % dl- 97: (-)98	97.0 % sum of two isomers /GC(M-1b)
Refractive index	1.443-1.449 (n <sub>20D</sub> )	dl:1.443-1.450	1.443-1.450 (n <sub>20D</sub> )
Specific gravity	0.923-0.929 (d <sub>20/20</sub> )	dl:0.919-0.924 (d <sub>25/25</sub> )	0.921-0.926 (d <sub>25/25</sub> )
Acid value (NMT)	1.0	2.0	2.0
Melting/Congeealing point			
Angular/Specific rotation		OR: >= - 69° (-)-isome	
Heavy metals (NMT)			
Solubility in ethanol		1 ml in 6 ml 70% alcohol; 1 ml in 1 ml 80% alcohol	1 mL in 1 mL 95% ethanol
Other requirements		(-)- RI: 1.443-1.447,	
Identification*	IR : 1,3,5 MS : 3,4,5 NMR :	IR	

### \*References

- 1: Joint FAO/WHO Expert Committee on Food Additive (JECFA)
- 2: Food Chemicals Codex (FCC)
- 3: 有機化合物のスペクトルデータベース SDBS(独立行政法人産業技術総合研究所)
- 4: Wiley's Registry of Mass spectral Database
- 5: NIST/EPA/NIH Mass Spectral Library
- 6: Sigma-Aldrich