

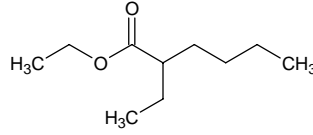
ethyl 2-ethylhexanoate

エチル 2-エチルヘキサノエート

Formula C₁₀H₂₀O₂

Mol. Wt. 172.26

CAS No. 2983-37-1



SEQ No. 750 エステル類

FEMA No. 4345

JECFA No.

	JFFMA	JECFA	FCC
Chemical name	ethyl 2-ethylhexanoate		
Content (NLT)	98.0 % (GC)		
Refractive index	1.411-1.417 (n _{20D})		
Specific gravity	0.860-0.866 (d _{20/20})		
Acid value (NMT)	1.0		
Melting/Congeealing point			
Angular/Specific rotation			
Heavy metals (NMT)			
Solubility in ethanol			
Other requirements			
Identification*	IR	:	
	MS	:	4,5
	NMR	:	

*References

- 1: Joint FAO/WHO Expert Committee on Food Additive (JECFA)
- 2: Food Chemicals Codex (FCC)
- 3: 有機化合物のスペクトルデータベース SDBS(独立行政法人産業技術総合研究所)
- 4: Wiley's Registry of Mass spectral Database
- 5: NIST/EPA/NIH Mass Spectral Library
- 6: Sigma-Aldrich