

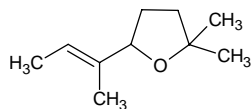
2,2-dimethyl-5-(1-methyl-1-propenyl)tetrahydrofuran

2,2-ジメチル-5-(1-メチル-1-プロペニル)テトラヒドロフラン

Formula C₁₀H₁₈O

Mol. Wt. 154.25

CAS No. 7416-35-5



SEQ No. 650 エーテル類

FEMA No. 3665

JECFA No. 1452

	JFFMA	JECFA	FCC
Chemical name	2,2-dimethyl-5-(1-methyl-1-propenyl)tetrahydrofuran	2,2-Dimethyl-5-(1-methylpropen-1-yl)tetrahydrofuran	
Content (NLT)	95.0 % (GC)	98 %	
Refractive index	1.442-1.452 (n _{20D})	1.446-1.451 (n _{20D})	
Specific gravity	0.862-0.872 (d _{20/20})	0.858-0.865 (d _{25/25})	
Acid value (NMT)		2.0	
Melting/Congeealing point			
Angular/Specific rotation			
Heavy metals (NMT)			
Solubility in ethanol		Soluble	
Other requirements			
Identification*	IR :1 MS :1,4,5 NMR :1	HNMR IR MS	

*References

- 1: Joint FAO/WHO Expert Committee on Food Additive (JECFA)
- 2: Food Chemicals Codex (FCC)
- 3: 有機化合物のスペクトルデータベース SDBS(独立行政法人産業技術総合研究所)
- 4: Wiley's Registry of Mass spectral Database
- 5: NIST/EPA/NIH Mass Spectral Library
- 6: Sigma-Aldrich