

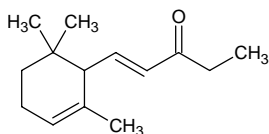
alpha-methylionone

α-メチルイオノン

Formula C₁₄H₂₂O

Mol. Wt. 206.32

CAS No. 7779-30-8
127-42-4



SEQ No. 1794 ケトン類

FEMA No. 2711

JECFA No. 398

	JFFMA	JECFA	FCC
Chemical name	alpha-methylionone	Methyl-alpha-ionone	
Content (NLT)	90.0 % (GC)	90 % minimum 95% sum of methyl ionone isomers	
Refractive index	1.495-1.505 (n _{20D})	1.498-1.503 (n _{20D})	
Specific gravity	0.927-0.937 (d _{20/20})	0.921-0.930 (d _{25/25})	
Acid value (NMT)			
Melting/Congeealing point			
Angular/Specific rotation			
Heavy metals (NMT)			
Solubility in ethanol			
Other requirements			
Identification*	IR : 1 MS : 4,5 NMR :	IR	

*References

- 1: Joint FAO/WHO Expert Committee on Food Additive (JECFA)
- 2: Food Chemicals Codex (FCC)
- 3: 有機化合物のスペクトルデータベース SDBS(独立行政法人産業技術総合研究所)
- 4: Wiley's Registry of Mass spectral Database
- 5: NIST/EPA/NIH Mass Spectral Library
- 6: Sigma-Aldrich