

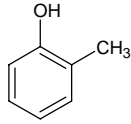
2-methylphenol

2-メチルフェノール

Formula C₇H₈O

Mol. Wt. 108.14

CAS No. 95-48-7



SEQ No. 421 フェノール類

FEMA No. 3480

JECFA No. 691

	JFFMA	JECFA	FCC
Chemical name	2-methylphenol	o-Cresol	
Content (NLT)	98.0 % (GC)	98 %	
Refractive index		1.544-1.548 (n _{20D})	
Specific gravity		1.041-1.046 (d _{25/25})	
Acid value (NMT)			
Melting/Congeeing point	MP: 29 to 33°C	MP: 31 to 32°C	
Angular/Specific rotation			
Heavy metals (NMT)			
Solubility in ethanol		very soluble	
Other requirements		liquid which may crystallize below 30°	
Identification*	IR : 1,3,6 MS : 3,4,5 NMR : 3,6	IR	

*References

- 1: Joint FAO/WHO Expert Committee on Food Additive (JECFA)
- 2: Food Chemicals Codex (FCC)
- 3: 有機化合物のスペクトルデータベース SDBS(独立行政法人産業技術総合研究所)
- 4: Wiley's Registry of Mass spectral Database
- 5: NIST/EPA/NIH Mass Spectral Library
- 6: Sigma-Aldrich