

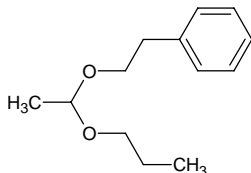
acetaldehyde phenethyl propyl acetal

アセトアルデヒド フェネチル プロピル アセタール

Formula C₁₃H₂₀O₂

Mol. Wt. 208.30

CAS No. 7493-57-4



SEQ No. 36 エーテル類

FEMA No. 2004

JECFA No. 1000

	JFFMA	JECFA	FCC
Chemical name	acetaldehyde phenethyl propyl acetal	Acetaldehyde phenethyl propyl acetal	
Content (NLT)	98.0 % (GC)	96 %	
Refractive index	1.475-1.481 (n _{20D})	1.475-1.483 (n _{20D})	
Specific gravity	0.948-0.954 (d _{20/20})	0.944-0.950 (d _{25/25})	
Acid value (NMT)	1.0	1.0	
Melting/Congeealing point			
Angular/Specific rotation			
Heavy metals (NMT)			
Solubility in ethanol		Miscible at room temperature	
Other requirements			
Identification*	IR :6 MS :4,5 NMR :1	NMR	

*References

- 1: Joint FAO/WHO Expert Committee on Food Additive (JECFA)
- 2: Food Chemicals Codex (FCC)
- 3: 有機化合物のスペクトルデータベース SDBS(独立行政法人産業技術総合研究所)
- 4: Wiley's Registry of Mass spectral Database
- 5: NIST/EPA/NIH Mass Spectral Library
- 6: Sigma-Aldrich