

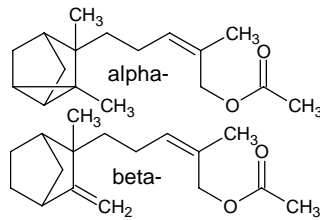
santalyl acetate

サンタリル アセテート

Formula C₁₇H₂₆O₂

Mol. Wt. 262.39

CAS No. 1323-00-8



SEQ No. 2286 エステル類

FEMA No. 3007

JECFA No. 985

	JFFMA	JECFA	FCC
Chemical name	santalyl acetate	Santalyl acetate (alpha and beta)	Santalyl Acetate
Content (NLT)	96.0 % (Chem) sum of isomers	95 % 60–65% alpha, 30–35% beta form	95.0 % total esters as C ₁₇ H ₂₆ O ₂ /Chem(Appendix VI; 1.6 g/131.2)
Refractive index	1.482–1.492 (n _{25D})	1.485–1.493 (n _{20D})	1.488–1.491 (n _{20D})
Specific gravity	0.982–0.992 (d _{25/25})	0.980–0.986 (d _{25/25})	0.980–0.986 (d _{25/25})
Acid value (NMT)	1.0	1.0	1.0
Melting/Congealing point			
Angular/Specific rotation			
Heavy metals (NMT)			
Solubility in ethanol		Miscible at room temperature	1 mL in 9 mL 80% alc gives clear soln
Other requirements			
Identification*	IR : 1,2 MS : NMR :	IR	IR

*References

- 1: Joint FAO/WHO Expert Committee on Food Additive (JECFA)
- 2: Food Chemicals Codex (FCC)
- 3: 有機化合物のスペクトルデータベース SDBS(独立行政法人産業技術総合研究所)
- 4: Wiley's Registry of Mass spectral Database
- 5: NIST/EPA/NIH Mass Spectral Library
- 6: Sigma-Aldrich