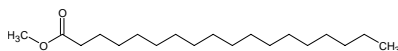


# methyl stearate

## メチル ステアレート

Formula C<sub>19</sub>H<sub>38</sub>O<sub>2</sub>



Mol. Wt. 298.50

CAS No. 112-61-8

SEQ No. 1715 エステル類

FEMA No.

JECFA No.

	JFFMA	JECFA	FCC
Chemical name	methyl stearate		
Content (NLT)	95.0 % (GC)		
Refractive index			
Specific gravity			
Acid value (NMT)	1.0		
Melting/Congeealing point	MP: 36 to 42°C		
Angular/Specific rotation			
Heavy metals (NMT)			
Solubility in ethanol			
Other requirements			
Identification*	IR	:3,5,6	
	MS	:3,4,5	
	NMR	:3	

### \*References

- 1: Joint FAO/WHO Expert Committee on Food Additive (JECFA)
- 2: Food Chemicals Codex (FCC)
- 3: 有機化合物のスペクトルデータベース SDBS(独立行政法人産業技術総合研究所)
- 4: Wiley's Registry of Mass spectral Database
- 5: NIST/EPA/NIH Mass Spectral Library
- 6: Sigma-Aldrich