

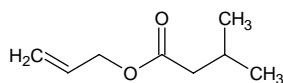
allyl isovalerate

アリル イソバレレート

Formula C₈H₁₄O₂

Mol. Wt. 142.20

CAS No. 2835-39-4



SEQ No. 112 エステル類

FEMA No. 2045

JECFA No. 7

	JFFMA	JECFA	FCC
Chemical name	allyl isovalerate	Allyl isovalerate	Allyl Isovalerate
Content (NLT)	98.0 % (GC)	98.0 %	98.0 % one isomer /GC(M-1b)
Refractive index	1.414-1.420 (n _{20D})	1.413-1.418 (n _{20D})	1.413-1.418 (n _{20D})
Specific gravity	0.882-0.888 (d _{20/20})	0.879-0.884 (d _{25/25})	0.879-0.884 (d _{25/25})
Acid value (NMT)	1.0	1.0	1.0
Melting/Congeealing point			
Angular/Specific rotation			
Heavy metals (NMT)			
Solubility in ethanol		1ml in 1ml 95% ethanol	1 mL in 1 mL 95% alc
Other requirements		Allyl alcohol 0.1% max	Allyl Alcohol : NMT 0.1% /GC(M-1b).
Identification*	IR : 1,2,3,5 MS : 3,4,5 NMR : 3	IR	IR

*References

- 1: Joint FAO/WHO Expert Committee on Food Additive (JECFA)
- 2: Food Chemicals Codex (FCC)
- 3: 有機化合物のスペクトルデータベース SDBS(独立行政法人産業技術総合研究所)
- 4: Wiley's Registry of Mass spectral Database
- 5: NIST/EPA/NIH Mass Spectral Library
- 6: Sigma-Aldrich