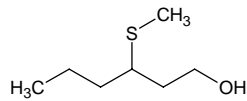


# 3-(methylthio)hexanol

## 3-(メチルチオ)ヘキサノール

Formula C<sub>7</sub>H<sub>16</sub>OS

Mol. Wt. 148.27



CAS No. 51755-66-9

SEQ No. 1880 脂肪族高級アルコール類

FEMA No. 3438

JECFA No. 463

	JFFMA	JECFA	FCC
Chemical name	3-(methylthio)hexanol	3-(Methylthio)-1-hexanol	
Content (NLT)	98.0 % (GC)	97 %	
Refractive index	1.476-1.489 (n <sub>20D</sub> )	1.474-1.489 (n <sub>20D</sub> )	
Specific gravity	0.964-0.974 (d <sub>20/20</sub> )	0.964-0.974 (20°C)	
Acid value (NMT)			
Melting/Congeealing point			
Angular/Specific rotation			
Heavy metals (NMT)			
Solubility in ethanol			
Other requirements			
Identification*	IR :1,6 MS :1,4 NMR :1,6	IR, MS, NMR	

### \*References

- 1: Joint FAO/WHO Expert Committee on Food Additive (JECFA)
- 2: Food Chemicals Codex (FCC)
- 3: 有機化合物のスペクトルデータベース SDBS(独立行政法人産業技術総合研究所)
- 4: Wiley's Registry of Mass spectral Database
- 5: NIST/EPA/NIH Mass Spectral Library
- 6: Sigma-Aldrich