

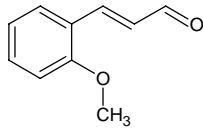
2'-methoxycinnamaldehyde

2'-メトキシシシナムアルデヒド

Formula C₁₀H₁₀O₂

Mol. Wt. 162.19

CAS No. 1504-74-1



SEQ No. 1566 芳香族アルデヒド類

FEMA No. 3181

JECFA No. 688

	JFFMA	JECFA	FCC
Chemical name	2'-methoxycinnamaldehyde	o-Methoxycinnamaldehyde	
Content (NLT)	96.0 % (GC)	94 % combined aldehyde and corresponding acid	
Refractive index			
Specific gravity			
Acid value (NMT)	5.0	5.0	
Melting/Congeeing point	MP: 45 to 49°C	MP: 45 to 46°C	
Angular/Specific rotation			
Heavy metals (NMT)			
Solubility in ethanol		miscible	
Other requirements		o-methoxycinnamic acid <3%	
Identification*	IR : 1 MS : 4,5 NMR :	IR	

*References

- 1: Joint FAO/WHO Expert Committee on Food Additive (JECFA)
- 2: Food Chemicals Codex (FCC)
- 3: 有機化合物のスペクトルデータベース SDBS(独立行政法人産業技術総合研究所)
- 4: Wiley's Registry of Mass spectral Database
- 5: NIST/EPA/NIH Mass Spectral Library
- 6: Sigma-Aldrich