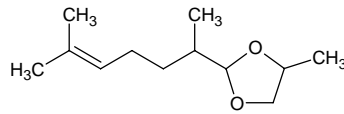


2,6-dimethyl-5-heptenal propyleneglycol acetal

2,6-ジメチル-5-ヘプテナル プロピレングリコール アセタール

Formula C₁₂H₂₂O₂

Mol. Wt. 198.30



CAS No. 74094-63-6

SEQ No. 651 エーテル類

FEMA No. 4382

JECFA No. 1740

	JFFMA	JECFA	FCC
Chemical name	2,6-dimethyl-5-heptenal propyleneglycol acetal	2,6-Dimethyl-5-heptenal propyleneglycol acetal	
Content (NLT)	97.0 % (GC) sum of isomers	97 %	
Refractive index	1.447-1.453 (n _{20D})	1.447-1.453 (n _{20D})	
Specific gravity	0.910-0.916 (d _{20/20})	0.910-0.916 (d _{25/25})	
Acid value (NMT)	1.0	1	
Melting/Congeealing point			
Angular/Specific rotation			
Heavy metals (NMT)			
Solubility in ethanol		Soluble	
Other requirements			
Identification*	IR : MS :1 NMR :	MS	

*References

- 1: Joint FAO/WHO Expert Committee on Food Additive (JECFA)
- 2: Food Chemicals Codex (FCC)
- 3: 有機化合物のスペクトルデータベース SDBS(独立行政法人産業技術総合研究所)
- 4: Wiley's Registry of Mass spectral Database
- 5: NIST/EPA/NIH Mass Spectral Library
- 6: Sigma-Aldrich