

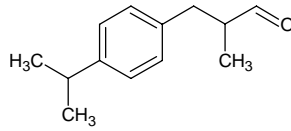
cyclamen aldehyde

シクラメン アルデヒド

Formula C₁₃H₁₈O

Mol. Wt. 190.28

CAS No. 103-95-7



SEQ No. 434 芳香族アルデヒド類

FEMA No. 2743

JECFA No. 1465

	JFFMA	JECFA	FCC
Chemical name	cyclamen aldehyde	2-methyl-3-(p-isopropylphenyl)propionaldehyde	Cyclamen Aldehyde
Content (NLT)	95.0 % (GC) sum of isomers	90 %	90.0 % sum of two isomers; major isomer 85.0% min /GC(M-1b)
Refractive index	1.501-1.511 (n _{20D})	1.503-1.508 (n _{20D})	1.503-1.508 (n _{20D})
Specific gravity	0.945-0.958 (d _{20/20})	0.946-0.952 (d _{25/25})	0.946-0.952 (d _{25/25})
Acid value (NMT)	5.0	5	5.0
Melting/Congeealing point			
Angular/Specific rotation			
Heavy metals (NMT)			
Solubility in ethanol		Soluble	1 mL in 3 mL 80% alc
Other requirements		SC: 2-Methyl-3-(p-isopropylphenyl)propionic acid, 3-Methyl-3-(p-isopropylphenyl)propionaldehyde	
Identification*	IR : 1,2,5 MS : 4,5 NMR :	IR	IR

*References

- 1: Joint FAO/WHO Expert Committee on Food Additive (JECFA)
- 2: Food Chemicals Codex (FCC)
- 3: 有機化合物のスペクトルデータベース SDBS(独立行政法人産業技術総合研究所)
- 4: Wiley's Registry of Mass spectral Database
- 5: NIST/EPA/NIH Mass Spectral Library
- 6: Sigma-Aldrich