

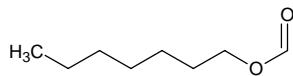
heptyl formate

ヘプチル ホーマート

Formula C₈H₁₆O₂

Mol. Wt. 144.21

CAS No. 112-23-2



SEQ No. 1061 エステル類

FEMA No. 2552

JECFA No. 121

	JFFMA	JECFA	FCC
Chemical name	heptyl formate	Heptyl formate	
Content (NLT)	97.0 % (GC)	94 % min. 99% heptyl formate + heptanal	
Refractive index	1.410-1.416 (n _{20D})	1.414 (n _{20D})	
Specific gravity	0.876-0.883 (d _{20/20})	0.88277 (15°C)	
Acid value (NMT)	1.0		
Melting/Congeealing point			
Angular/Specific rotation			
Heavy metals (NMT)			
Solubility in ethanol		1 ml in 5 ml 70% alcohol	
Other requirements			
Identification*	IR : 1,3,5 MS : 4,5 NMR : 6	IR	

*References

- 1: Joint FAO/WHO Expert Committee on Food Additive (JECFA)
- 2: Food Chemicals Codex (FCC)
- 3: 有機化合物のスペクトルデータベース SDBS(独立行政法人産業技術総合研究所)
- 4: Wiley's Registry of Mass spectral Database
- 5: NIST/EPA/NIH Mass Spectral Library
- 6: Sigma-Aldrich