

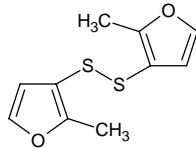
bis(2-methyl-3-furyl) disulfide

ビス(2-メチル-3-フリル) ジスルフィド

Formula C₁₀H₁₀O₂S₂

Mol. Wt. 226.32

CAS No. 28588-75-2



SEQ No. 246 チオエーテル類

FEMA No. 3259

JECFA No. 1066

	JFFMA	JECFA	FCC
Chemical name	bis(2-methyl-3-furyl) disulfide	bis(2-Methyl-3-furyl) disulfide	
Content (NLT)	98.0 % (GC)	98 %	
Refractive index	1.572-1.583 (n _{20D})	1.572-1.583 (n _{20D})	
Specific gravity	1.207-1.217 (d _{20/20})	1.146-1.154 (d _{25/25})	
Acid value (NMT)			
Melting/Congeealing point			
Angular/Specific rotation			
Heavy metals (NMT)			
Solubility in ethanol		Miscible at room temperature	
Other requirements			
Identification*	IR : MS : NMR :1	NMR	

*References

- 1: Joint FAO/WHO Expert Committee on Food Additive (JECFA)
- 2: Food Chemicals Codex (FCC)
- 3: 有機化合物のスペクトルデータベース SDBS(独立行政法人産業技術総合研究所)
- 4: Wiley's Registry of Mass spectral Database
- 5: NIST/EPA/NIH Mass Spectral Library
- 6: Sigma-Aldrich