

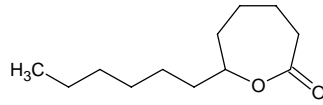
epsilon-dodecalactone

ε-ドデカラクトン

Formula C₁₂H₂₂O₂

Mol. Wt. 198.30

CAS No. 16429-21-3



SEQ No. 720 ラクトン類

FEMA No. 3610

JECFA No. 242

	JFFMA	JECFA	FCC
Chemical name	epsilon-dodecalactone	epsilon-Dodecalactone	
Content (NLT)	98.0 % (GC)	99 %	
Refractive index	1.459-1.466 (n _{20D})	1.459-1.463 (n _{20D})	
Specific gravity	0.952-0.958 (d _{20/20})	0.950-0.958 (d _{25/25})	
Acid value (NMT)	3.0		
Melting/Congeealing point			
Angular/Specific rotation			
Heavy metals (NMT)			
Solubility in ethanol			
Other requirements			
Identification*	IR :1 MS :4,5 NMR :	IR	

*References

- 1: Joint FAO/WHO Expert Committee on Food Additive (JECFA)
- 2: Food Chemicals Codex (FCC)
- 3: 有機化合物のスペクトルデータベース SDBS(独立行政法人産業技術総合研究所)
- 4: Wiley's Registry of Mass spectral Database
- 5: NIST/EPA/NIH Mass Spectral Library
- 6: Sigma-Aldrich