

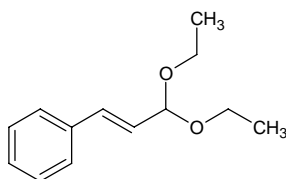
# cinnamaldehyde diethyl acetal

## シンナムアルデヒド ジエチル アセタール

Formula C<sub>13</sub>H<sub>18</sub>O<sub>2</sub>

Mol. Wt. 206.28

CAS No. 7148-78-9  
25226-98-6



SEQ No. 374 エーテル類

FEMA No.

JECFA No.

	JFFMA	JECFA	FCC
Chemical name	cinnamaldehyde diethyl acetal		
Content (NLT)	96.0 % (GC)		
Refractive index	1.510-1.520 (n <sub>20D</sub> )		
Specific gravity	0.973-0.983 (d <sub>20/20</sub> )		
Acid value (NMT)	1.0		
Melting/Congeaing point			
Angular/Specific rotation			
Heavy metals (NMT)			
Solubility in ethanol			
Other requirements			
Identification*	IR :3		
	MS :3		
	NMR :		

### \*References

- 1: Joint FAO/WHO Expert Committee on Food Additive (JECFA)
- 2: Food Chemicals Codex (FCC)
- 3: 有機化合物のスペクトルデータベース SDBS(独立行政法人産業技術総合研究所)
- 4: Wiley's Registry of Mass spectral Database
- 5: NIST/EPA/NIH Mass Spectral Library
- 6: Sigma-Aldrich