

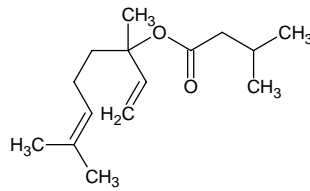
linalyl isovalerate

リナリル イソバレレート

Formula C₁₅H₂₆O₂

Mol. Wt. 238.37

CAS No. 1118-27-0



SEQ No. 1483 エステル類

FEMA No. 2646

JECFA No. 363

	JFFMA	JECFA	FCC
Chemical name	linalyl isovalerate	Linalyl isovalerate	
Content (NLT)	94.0 % (GC)	96 %	
Refractive index	1.446–1.456 (n _{20D})	1.448–1.453 (n _{20D})	
Specific gravity	0.881–0.891 (d _{20/20})	0.880–0.888 (d _{25/25})	
Acid value (NMT)	1.0	0.09	
Melting/Congeeing point			
Angular/Specific rotation			
Heavy metals (NMT)			
Solubility in ethanol		1 ml in 5.5 to 7 ml 80% alcohol	
Other requirements			
Identification*	IR :1 MS :4 NMR :	IR	

*References

- 1: Joint FAO/WHO Expert Committee on Food Additive (JECFA)
- 2: Food Chemicals Codex (FCC)
- 3: 有機化合物のスペクトルデータベース SDBS(独立行政法人産業技術総合研究所)
- 4: Wiley's Registry of Mass spectral Database
- 5: NIST/EPA/NIH Mass Spectral Library
- 6: Sigma-Aldrich