

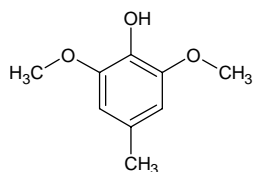
2,6-dimethoxy-4-methylphenol

2,6-ジメトキシ-4-メチルフェノール

Formula C₉H₁₂O₃

Mol. Wt. 168.19

CAS No. 6638-05-7



SEQ No. 1730 フェノール類

FEMA No. 3704

JECFA No. 722

	JFFMA	JECFA	FCC
Chemical name	2,6-dimethoxy-4-methylphenol	4-Methyl-2,6-dimethoxyphenol	
Content (NLT)	95.0 % (GC)	97 %	
Refractive index	1.542-1.546 (n _{25D})		
Specific gravity	1.154-1.160 (d _{25/25})		
Acid value (NMT)			
Melting/Congeealing point	MP: 37 to 42°C		
Angular/Specific rotation			
Heavy metals (NMT)			
Solubility in ethanol	moderately soluble		
Other requirements			
Identification*	IR :1 MS :3 NMR :3,6	IR	

*References

- 1: Joint FAO/WHO Expert Committee on Food Additive (JECFA)
- 2: Food Chemicals Codex (FCC)
- 3: 有機化合物のスペクトルデータベース SDBS(独立行政法人産業技術総合研究所)
- 4: Wiley's Registry of Mass spectral Database
- 5: NIST/EPA/NIH Mass Spectral Library
- 6: Sigma-Aldrich