

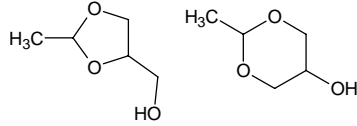
# acetaldehyde glyceryl acetal

## アセトアルデヒド グリセリル アセタール

Formula C<sub>5</sub>H<sub>10</sub>O<sub>3</sub>

Mol. Wt. 118.13

CAS No. 3674-21-3



SEQ No. 33 エーテル類

FEMA No.

JECFA No.

	JFFMA	JECFA	FCC
Chemical name	acetaldehyde glyceryl acetal		
Content (NLT)	97.0 % (GC) sum of isomers		
Refractive index	1.440-1.447 (n <sub>20D</sub> )		
Specific gravity	1.125-1.135 (d <sub>20</sub> /20)		
Acid value (NMT)	1.0		
Melting/Congeaing point			
Angular/Specific rotation			
Heavy metals (NMT)			
Solubility in ethanol			
Other requirements			
Identification*	IR : MS :4 NMR :3		

### \*References

- 1: Joint FAO/WHO Expert Committee on Food Additive (JECFA)
- 2: Food Chemicals Codex (FCC)
- 3: 有機化合物のスペクトルデータベース SDBS(独立行政法人産業技術総合研究所)
- 4: Wiley's Registry of Mass spectral Database
- 5: NIST/EPA/NIH Mass Spectral Library
- 6: Sigma-Aldrich