

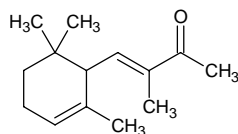
alpha-isomethylionone

α-イソメチルイオン

Formula C₁₄H₂₂O

Mol. Wt. 206.32

CAS No. 127-51-5



SEQ No. 1394 ケトン類

FEMA No.

JECFA No. 404

	JFFMA	JECFA	FCC
Chemical name	alpha-isomethylionone	alpha-iso-Methylionone	
Content (NLT)	90.0 % (GC) sum of isomers	85 % min. 95% sum of isomers	
Refractive index	1.496-1.506 (n _{20D})	1.498-1.503 (n _{20D})	
Specific gravity	0.926-0.936 (d _{20/20})	0.925-0.934 (d _{25/25})	
Acid value (NMT)			
Melting/Congeealing point			
Angular/Specific rotation			
Heavy metals (NMT)			
Solubility in ethanol		-	
Other requirements			
Identification*	IR :1 MS :4 NMR :	IR	

*References

- 1: Joint FAO/WHO Expert Committee on Food Additive (JECFA)
- 2: Food Chemicals Codex (FCC)
- 3: 有機化合物のスペクトルデータベース SDBS(独立行政法人産業技術総合研究所)
- 4: Wiley's Registry of Mass spectral Database
- 5: NIST/EPA/NIH Mass Spectral Library
- 6: Sigma-Aldrich