

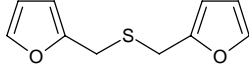
difurfuryl sulfide

ジフルフリル スルフィド

Formula C₁₀H₁₀O₂S

Mol. Wt. 194.25

CAS No. 13678-67-6



SEQ No. 561 チオエーテル類

FEMA No. 3238

JECFA No. 1080

	JFFMA	JECFA	FCC
Chemical name	difurfuryl sulfide	2,2'-(Thiodimethylene) difuran	
Content (NLT)	95.0 % (GC)	95 %	
Refractive index		1.545-1.560 (n _{20D})	
Specific gravity		1.144-1.154 (d _{25/25})	
Acid value (NMT)			
Melting/Congeealing point	MP: 30 to 33°C		
Angular/Specific rotation			
Heavy metals (NMT)			
Solubility in ethanol		Miscible at room temperature	
Other requirements			
Identification*	IR : MS :4,5 NMR :1,6	NMR	

*References

- 1: Joint FAO/WHO Expert Committee on Food Additive (JECFA)
- 2: Food Chemicals Codex (FCC)
- 3: 有機化合物のスペクトルデータベース SDBS(独立行政法人産業技術総合研究所)
- 4: Wiley's Registry of Mass spectral Database
- 5: NIST/EPA/NIH Mass Spectral Library
- 6: Sigma-Aldrich