

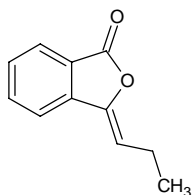
3-propylidenephthalide

3-プロピリデンフタリド

Formula C₁₁H₁₀O₂

Mol. Wt. 174.20

CAS No. 17369-59-4



SEQ No. 2256 ラクトン類

FEMA No. 2952

JECFA No. 1168

	JFFMA	JECFA	FCC
Chemical name	3-propylidenephthalide	3-Propylidenephthalide	
Content (NLT)	96.0 % (GC) sum of isomers	96 %	
Refractive index	1.577-1.589 (n _{20D})	1.557-1.562 (n _{20D})	
Specific gravity	1.124-1.137 (d _{20/20})	1.127-1.132 (d _{25/25})	
Acid value (NMT)	5.0	1.0	
Melting/Congeealing point			
Angular/Specific rotation			
Heavy metals (NMT)			
Solubility in ethanol		soluble	
Other requirements			
Identification*	IR : MS :4,5 NMR :1,6	NMR	

*References

- 1: Joint FAO/WHO Expert Committee on Food Additive (JECFA)
- 2: Food Chemicals Codex (FCC)
- 3: 有機化合物のスペクトルデータベース SDBS(独立行政法人産業技術総合研究所)
- 4: Wiley's Registry of Mass spectral Database
- 5: NIST/EPA/NIH Mass Spectral Library
- 6: Sigma-Aldrich