

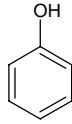
phenol

フェノール

Formula C₆H₆O

Mol. Wt. 94.11

CAS No. 108-95-2



SEQ No. 2127 フェノール類

FEMA No. 3223

JECFA No. 690

	JFFMA	JECFA	FCC
Chemical name	phenol	Phenol	
Content (NLT)	98.0 % (GC)	98 %	
Refractive index			
Specific gravity			
Acid value (NMT)			
Melting/Congeealing point	MP: 36 to 43°C	MP: 40 to 43°C	
Angular/Specific rotation			
Heavy metals (NMT)			
Solubility in ethanol		very soluble	
Other requirements			
Identification*	IR : 1,5,6 MS : 4,5 NMR : 6	IR	

*References

- 1: Joint FAO/WHO Expert Committee on Food Additive (JECFA)
- 2: Food Chemicals Codex (FCC)
- 3: 有機化合物のスペクトルデータベース SDBS(独立行政法人産業技術総合研究所)
- 4: Wiley's Registry of Mass spectral Database
- 5: NIST/EPA/NIH Mass Spectral Library
- 6: Sigma-Aldrich