

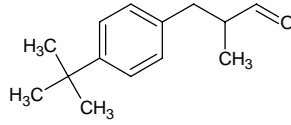
2-methyl-3-(4-tert-butylphenyl)propanal

2-メチル-3-(4-tert-ブチルフェニル)プロパナール

Formula C₁₄H₂₀O

Mol. Wt. 204.31

CAS No. 80-54-6



SEQ No. 1759 芳香族アルデヒド類

FEMA No.

JECFA No.

	JFFMA	JECFA	FCC
Chemical name	2-methyl-3-(4-tert-butylphenyl)propanal		
Content (NLT)	97.0 % (GC)		
Refractive index	1.502-1.508 (n _{20D})		
Specific gravity	0.942-0.948 (d _{25/25})		
Acid value (NMT)	2.0		
Melting/Congeealing point			
Angular/Specific rotation			
Heavy metals (NMT)			
Solubility in ethanol			
Other requirements			
Identification*	IR : 3,5		
	MS : 3,4,5		
	NMR :		

*References

- 1: Joint FAO/WHO Expert Committee on Food Additive (JECFA)
- 2: Food Chemicals Codex (FCC)
- 3: 有機化合物のスペクトルデータベース SDBS(独立行政法人産業技術総合研究所)
- 4: Wiley's Registry of Mass spectral Database
- 5: NIST/EPA/NIH Mass Spectral Library
- 6: Sigma-Aldrich