

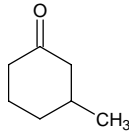
3-methylcyclohexanone

3-メチルシクロヘキサノン

Formula C₇H₁₂O

Mol. Wt. 112.17

CAS No. 591-24-2



SEQ No. 1827 ケトン類

FEMA No. 3947

JECFA No. 1103

	JFFMA	JECFA	FCC
Chemical name	3-methylcyclohexanone	3-Methylcyclohexanone	
Content (NLT)	97.0 % (GC)	97 %	
Refractive index	1.440-1.450 (n _{20D})	1.440-1.450 (n _{20D})	
Specific gravity	0.910-0.920 (d _{20/20})	0.914-0.919 (d _{25/25})	
Acid value (NMT)			
Melting/Congeealing point			
Angular/Specific rotation			
Heavy metals (NMT)			
Solubility in ethanol		Miscible at room temperature	
Other requirements			
Identification*	IR : 1,3,5,6 MS : 1,3,4,5 NMR : 1,3,6	MS IR NMR	

*References

- 1: Joint FAO/WHO Expert Committee on Food Additive (JECFA)
- 2: Food Chemicals Codex (FCC)
- 3: 有機化合物のスペクトルデータベース SDBS(独立行政法人産業技術総合研究所)
- 4: Wiley's Registry of Mass spectral Database
- 5: NIST/EPA/NIH Mass Spectral Library
- 6: Sigma-Aldrich