

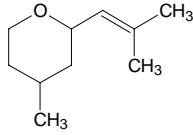
4-methyl-2-(2-methyl-1-propenyl)tetrahydropyran

4-メチル-2-(2-メチル-1-プロペニル)テトラヒドロピラン

Formula C₁₀H₁₈O

Mol. Wt. 154.25

CAS No. 16409-43-1



SEQ No. 2278 エーテル類

FEMA No. 3236

JECFA No. 1237

	JFFMA	JECFA	FCC
Chemical name	4-methyl-2-(2-methyl-1-propenyl)tetrahydropyran	Tetrahydro-4-methyl-2-(2-methylpropen-1-yl)pyran	
Content (NLT)	95.0 % (GC)	99 %	
Refractive index	1.450-1.460 (n _{20D})	1.453-1.457 (n _{20D})	
Specific gravity	0.867-0.883 (d _{20/20})	0.873-0.877 (d _{25/25})	
Acid value (NMT)		1	
Melting/Congeealing point			
Angular/Specific rotation			
Heavy metals (NMT)			
Solubility in ethanol		soluble	
Other requirements			
Identification*	IR : MS :4,5 NMR :1	NMR	

*References

- 1: Joint FAO/WHO Expert Committee on Food Additive (JECFA)
- 2: Food Chemicals Codex (FCC)
- 3: 有機化合物のスペクトルデータベース SDBS(独立行政法人産業技術総合研究所)
- 4: Wiley's Registry of Mass spectral Database
- 5: NIST/EPA/NIH Mass Spectral Library
- 6: Sigma-Aldrich